

LEADERSHIP IN CARBON MANAGEMENT

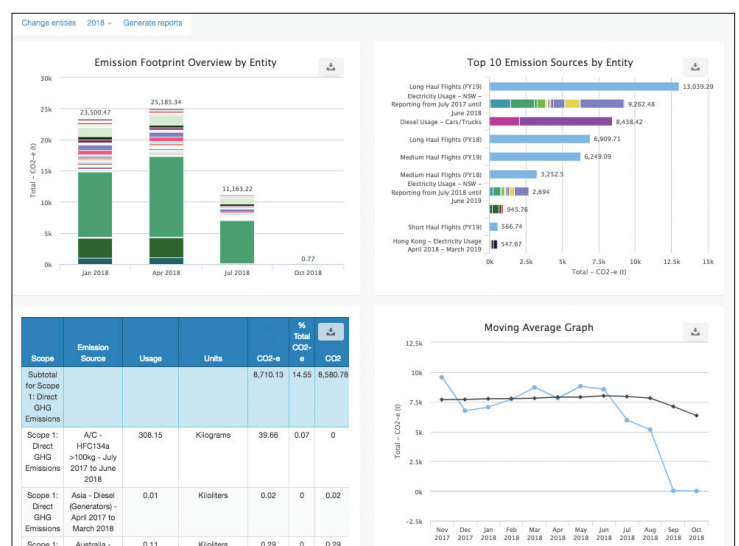
Measure, analyse, reduce & offset your carbon footprint

Introducing CarbonView

CarbonView is a powerful and internationally-used enterprise carbon management system. We have worked with organisations around the world to improve their organisation and product carbon footprints and business processes.

BUSINESS BENEFITS

- **SIMPLIFIED DATA COLLECTION** and reduced cost of carbon footprinting and compliance reporting
- Build **INTERACTIVE AND DYNAMIC DASHBOARDS** and reports for all stakeholders
- Effectively **MANAGE YOUR PERFORMANCE AGAINST TARGETS**, carbon abatement and resource efficiency projects
- **PURCHASE AND MANAGE OFFSETS** through the Carbon Trade Exchange (CTX)—the world's only electronic spot trading exchange for both ACR voluntary and registry offset credits





CARBONVIEW KEY FEATURES

EFFICIENT DATA CAPTURE

- Carbon measurement and sustainability reporting in accordance with all global standards
- Customisable metrics and emission sources
- Direct integration with existing systems and mobile workforce

INTERACTIVE & DYNAMIC REPORTING

- Interactive reporting suite including ad hoc reports
- Automated reporting with real-time calculation
- Dynamic dashboards tailored to user profiles
- Efficient distribution—publish, schedule & email

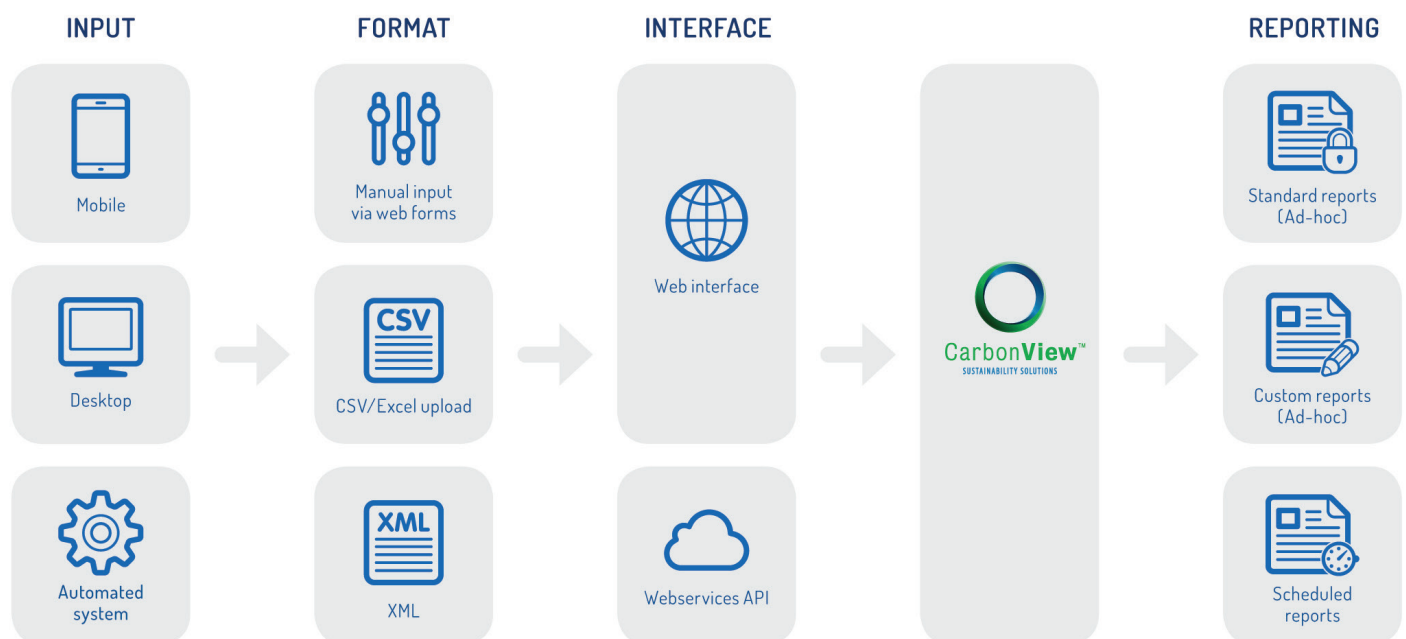
POWERFUL PERFORMANCE MANAGEMENT

- Establish absolute and intensity targets
- Visibility across the enterprise and supply chain
- Track performance against targets to drive ROI
- Carbon abatement and energy efficiency projects

EFFECTIVE MANAGEMENT

- Strong security capabilities & data privacy
- Multilingual capabilities
- Robust auditability for compliance reporting

CARBONVIEW PROCESS



REQUEST A DEMO

w: simbleenergy.com/carbonreporting

e: hello@simblegroup.com